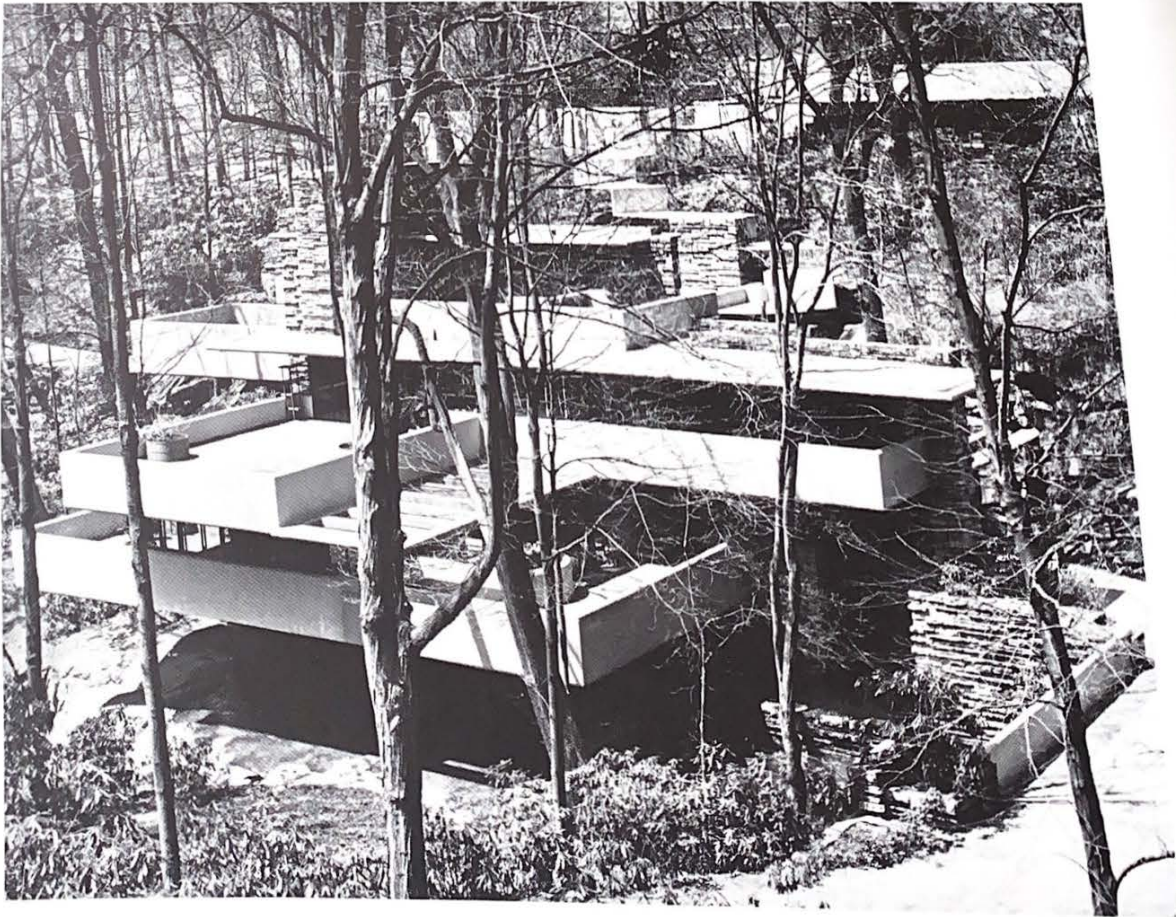


The Architect

Through the eyes of the architect, we shape our environment by designing buildings and building complexes and the spaces and relationships inside, around, and among them. The architecture of our towns and cities results from his activities. His planning gives direction to how people will live in relationship to each other and how they will work, study, play, eat, sleep, travel and worship. His experience and research permit him to select the appropriate building materials and systems to form our enclosures. His objective is to maintain a balance and order to the ecology of our environment, to cause it to function properly within structures that are safe and healthful, and to impart to all a beauty and distinction that are appropriate to our time.

History bears out clearly that it is the work of the architect that records for posterity the spirit of our times. We need to consider well the spirit we record, the statement that will tell unborn generations of our values, our hopes, and our understanding of truth in personal relationships with each other and our environment. It is to the challenge of this statement that the architect addresses himself today.



"Falling Water"

The Kaufmann
Ohiopyle, Pa.,
twentieth cen

"Falling Water
jecting slabs"
the vertical r

The interior
to the pavil

The house
tural techn
nature's st

Today's r
interacti
judgmer

"Falling Water"

The Kaufmann house, built across Bear Run near Ohiopyle, Pa., is one of the complete masterpieces of twentieth century art.

"Falling Water" is of cantilever construction, the projecting slabs balanced on piers below and stabilized by the vertical masonry planes from which they spring.

The interior cave is fixed in the rock and opens out to the pavilion above the water.

The house takes advantage of the most advanced structural techniques and fully celebrates the drama of nature's stream below.

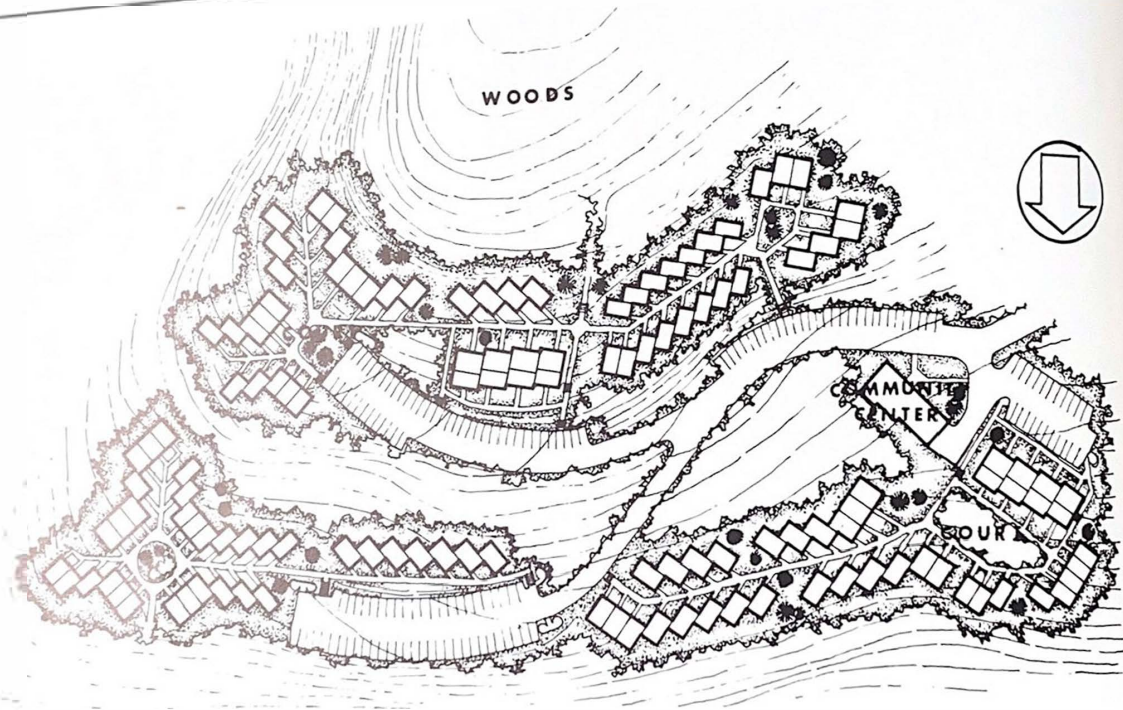
Today's architect continues to seek this harmonious interaction of function, technology and aesthetic judgment.

130 Units of Public Housing for
East Liverpool, Ohio

Four villages of townhouses are grouped on a heavily wooded and steeply sloped site. These closely knit villages are separated by large areas of untouched woods and are linked together with paths, roads, and parking areas. The houses of prefabricated, weathering cedar panels cluster along a series of highly differentiated pedestrian streets and squares. They are staggered to provide identity and privacy for each unit.

22

16

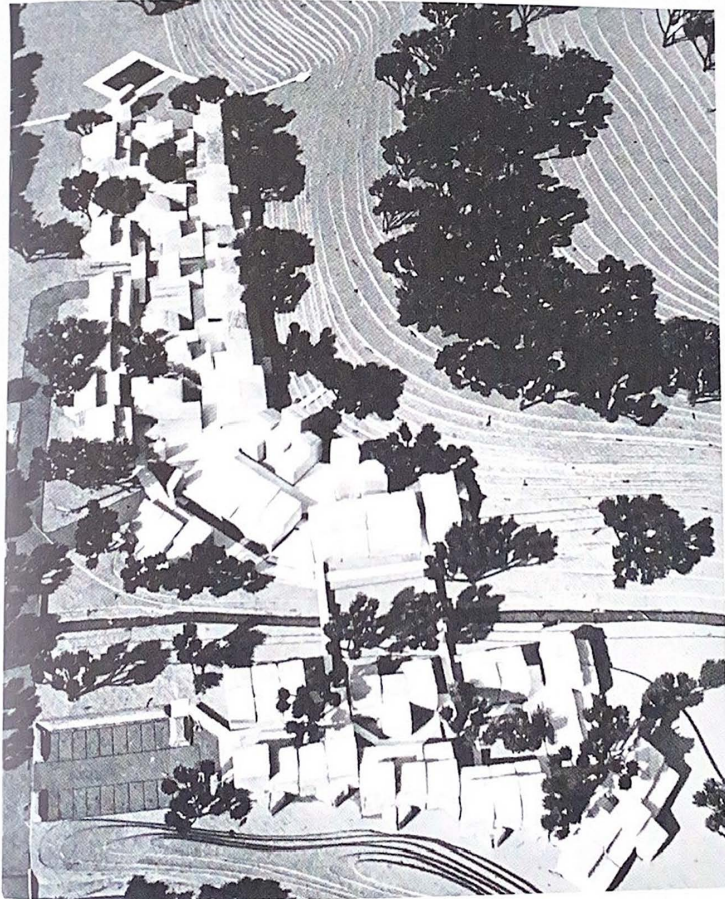
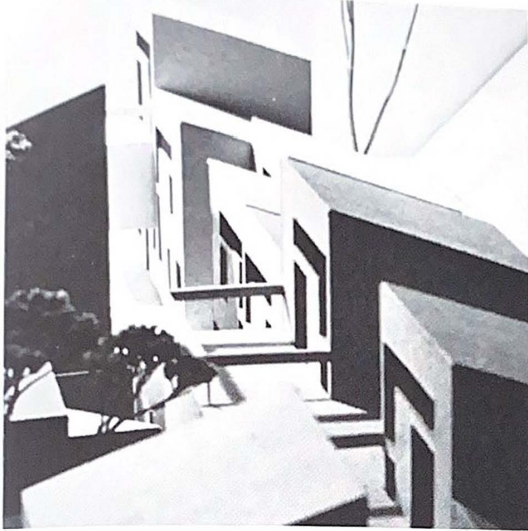




Hampton Townhouses
Hampton Township

L. Arthur Lubetz, AIA — Architect

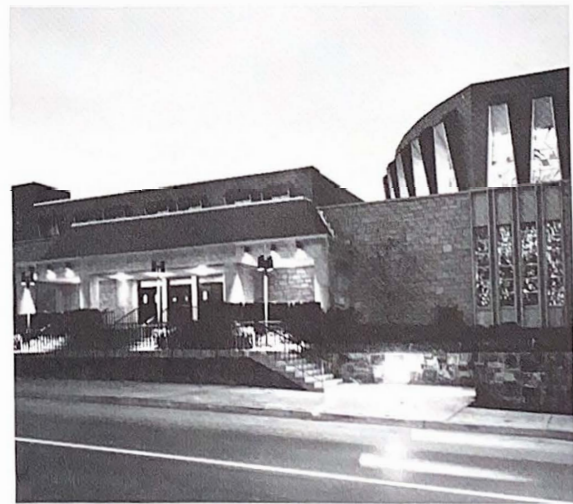
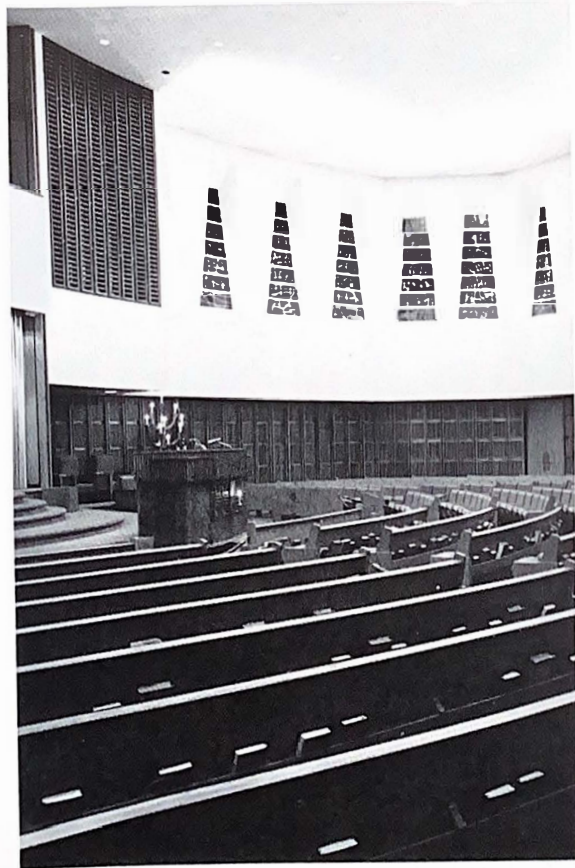
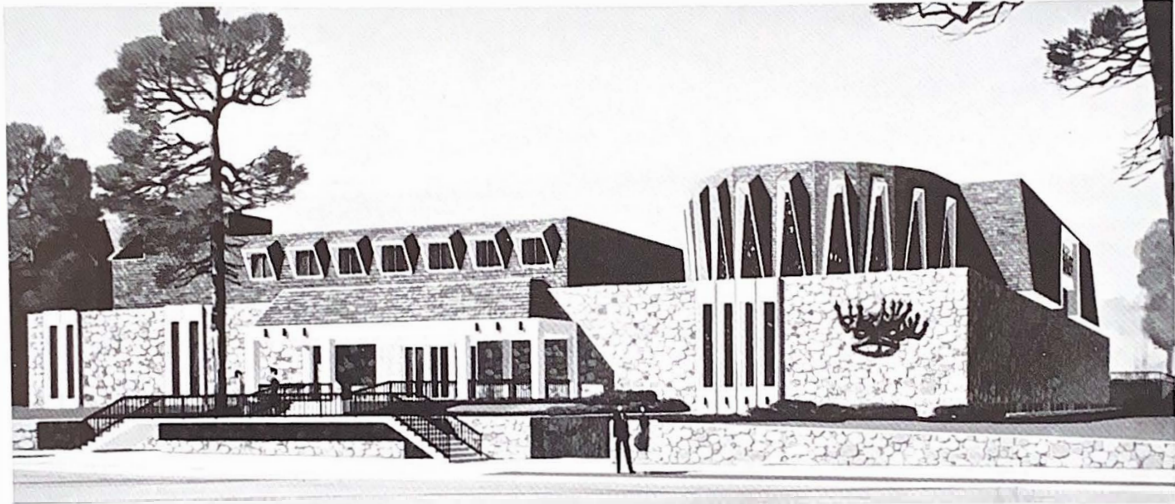
The 100 unit townhouse complex is situated in a narrow stream valley. Major considerations were to provide an exciting alternative to the usual suburban development and to preserve the natural landscape. The units are clustered along pedestrian circulation spines. These pedestrian streets link the units to community facilities, integral underground parking and create a strong sense of place.



Temple Sinai
Squirrel Hill, Pennsylvania

The architects, in designing the new sanctuary addition, also developed a concept for unifying the exterior of the existing building into the overall design. The result is one coherent statement that places the focus on the religious aspects of this project.

Liff, Justh, & Chetlin Architects/Engineers





Penn-Ce

The Ro
Pittsbu
an exc
of the

The s
restr
ficen
larly

The
sarr
cin

Ma
nc
or

Penn-Central Railroad Station Rotunda

The Rotunda is one of the finest buildings in the city of Pittsburgh. This building, designed by D. H. Burnham, is an excellent example of the new monumental classicism of the early nineteen hundreds.

The standard Beaux-Arts stylistic devices were used with restraint and taste. The domed rotunda with its magnificent four centered arches and elegant turrets is particularly distinguishing.

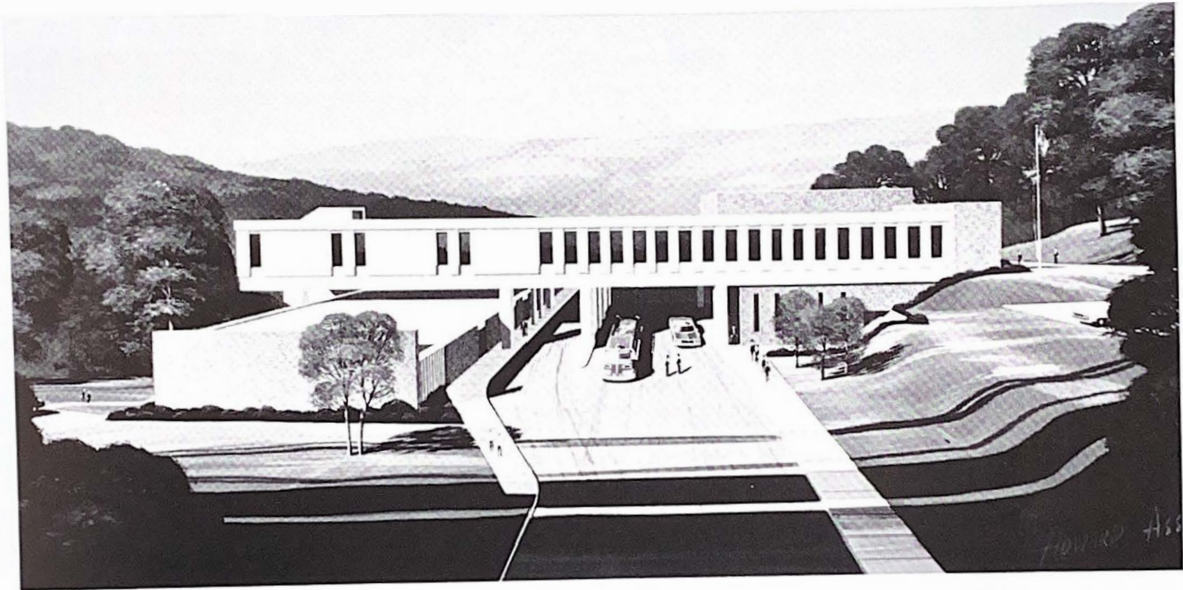
The interior has a mysterious cave-like quality and at the same time a pavilion of enchantment, endlessly fascinating.

Magic of this quality has a tendency to wane as technology advances but some of the old must be saved as ornament to warm the heart.

Allegheny County Police and Firemen Training Academy

52-acre academy at North Park will be used as a training facility for Municipal Police Officers and Volunteer Firemen from every municipality in Allegheny County on a voluntary attendance basis and house North Park Police and Fire Stations. Facility will be used to train police officers from neighboring counties plus in-service and command-school classes for present officers.

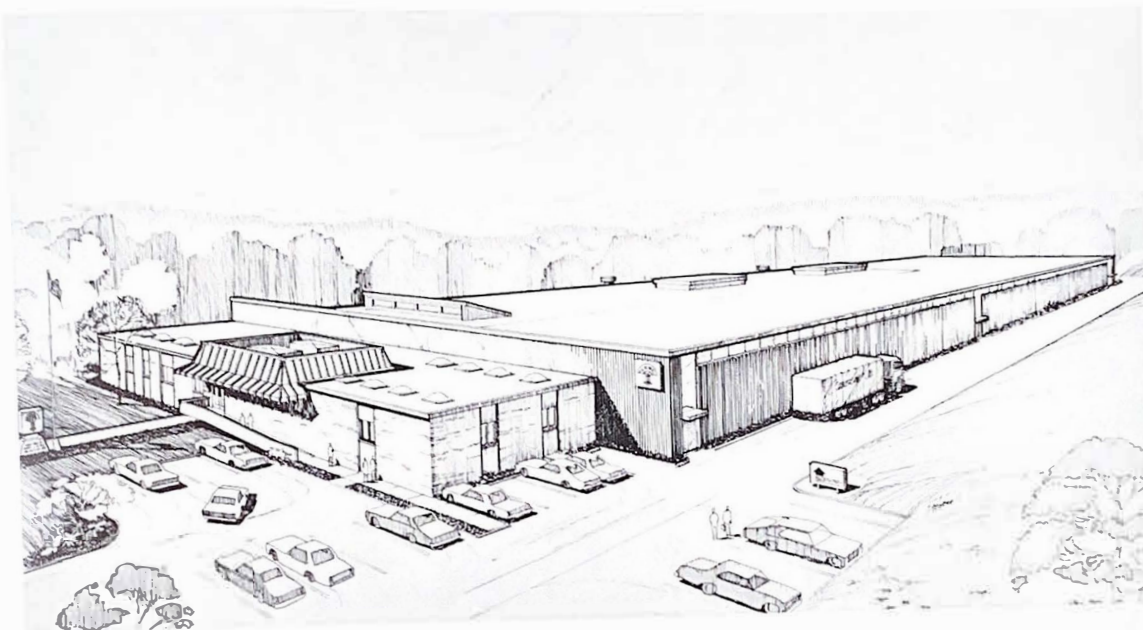
Kaclik & Graves, AIA — Architects



Permal, Incorporated
Mount Pleasant, Pennsylvania 15666

James F. Gayton III and Associates, AIA — Architects

The Comprehensive Master Plan will provide 90,000 square feet for the manufacturing of dielectric and industrial laminates, resin castings, and fiberglass structures and tubes. The present completed phase, as will future phases, allows for expansion by easy removal of the insulated sandwich panels which make up the exterior walls and their repositioning to become the new interior walls.

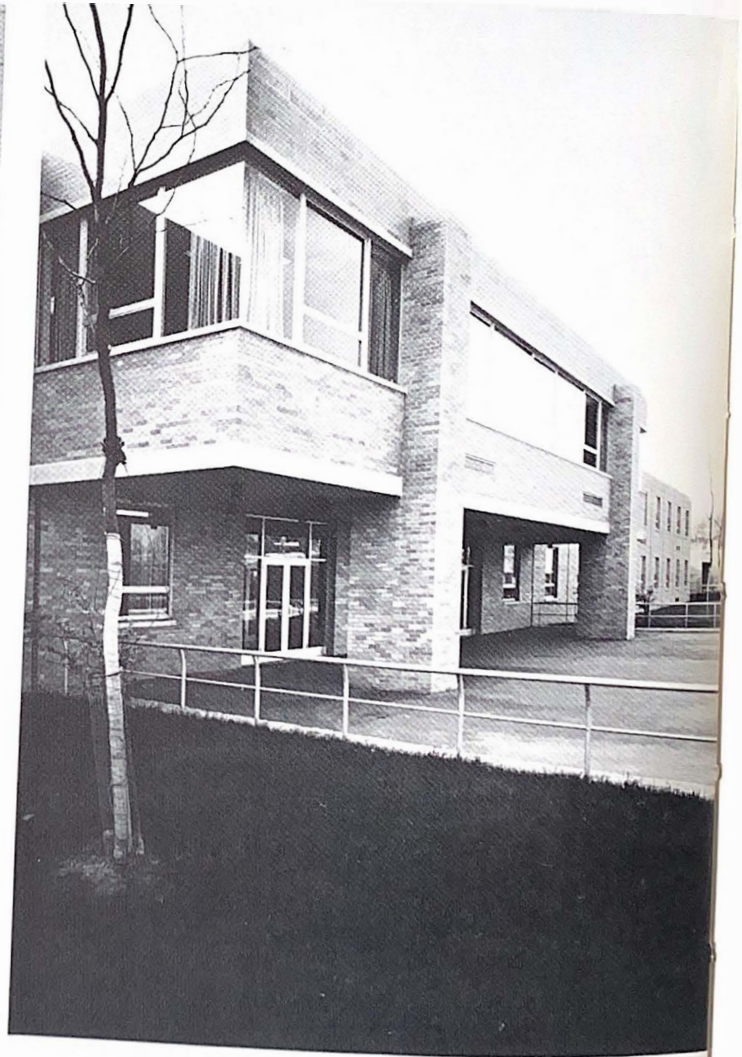
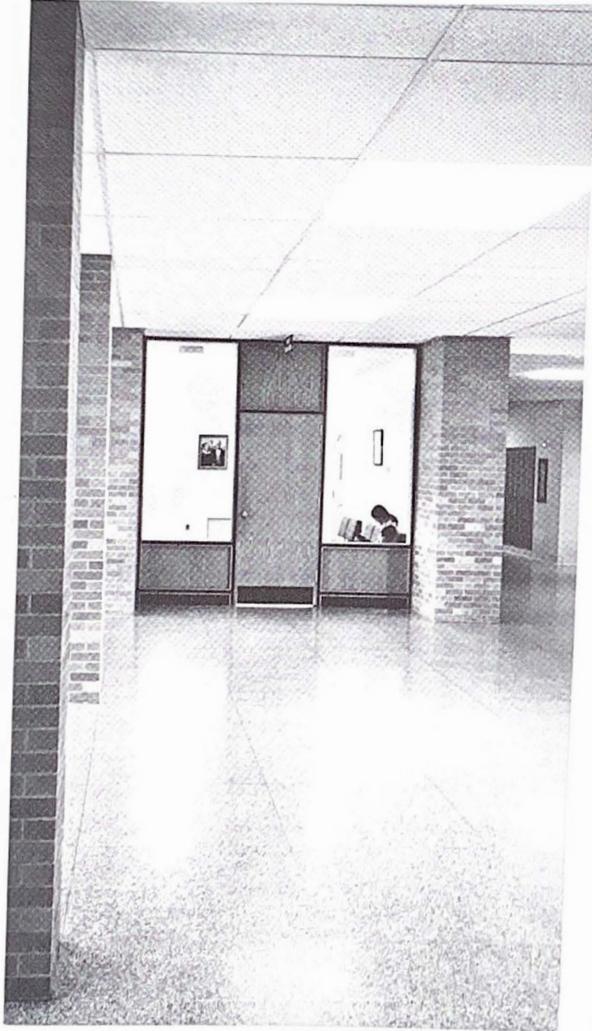


Thomas E. Carson Intermediate High School
North Allegheny School District
McCandless Township, Allegheny County

Stoltz, Hess and MacLachlan, AIA — Architects

Designed for a student body of 1300, the complex also includes the central offices of the School District, the District's central shops and bus repair garage. Constructed on a long, narrow hilltop site, the academic unit occupies two floors, with the gymnasium, auditorium, and food service facilities in flanking one story wings.

62

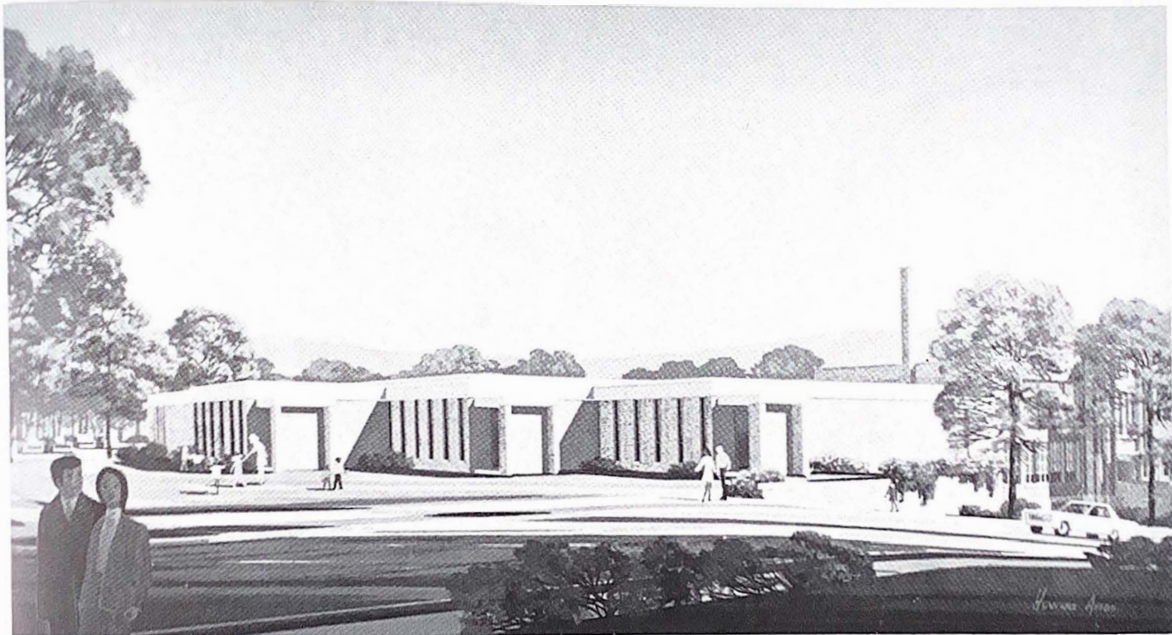


**Additions & Alterations to
Colfax Elementary School**

The additions and alterations to the existing Colfax School in Springdale will eliminate the sub-standard classrooms, and provide a facility with nineteen new and/or remodeled classrooms, two kindergartens, arts and crafts, music, health room, library, gym, large group instruction, cafeteria and office space.

826 pupils will be housed in the new two million dollar facility.

Desmone, Szalai & Desmone, AIA – Architects

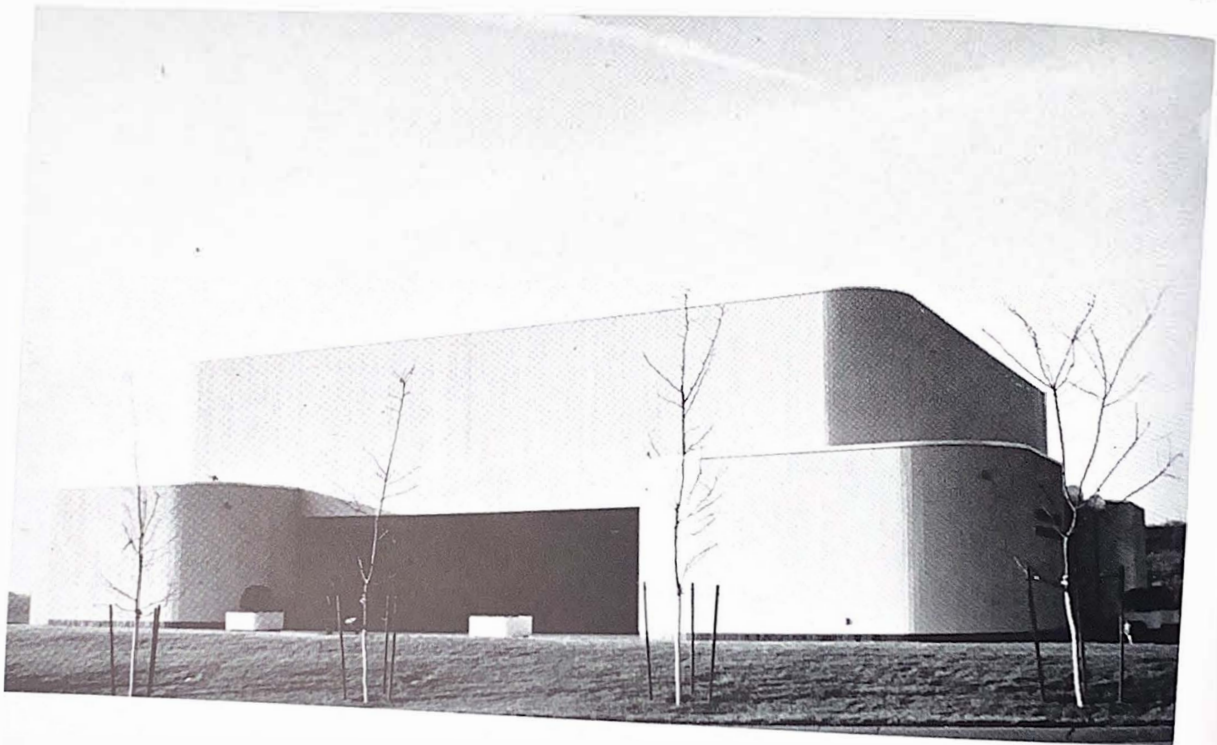


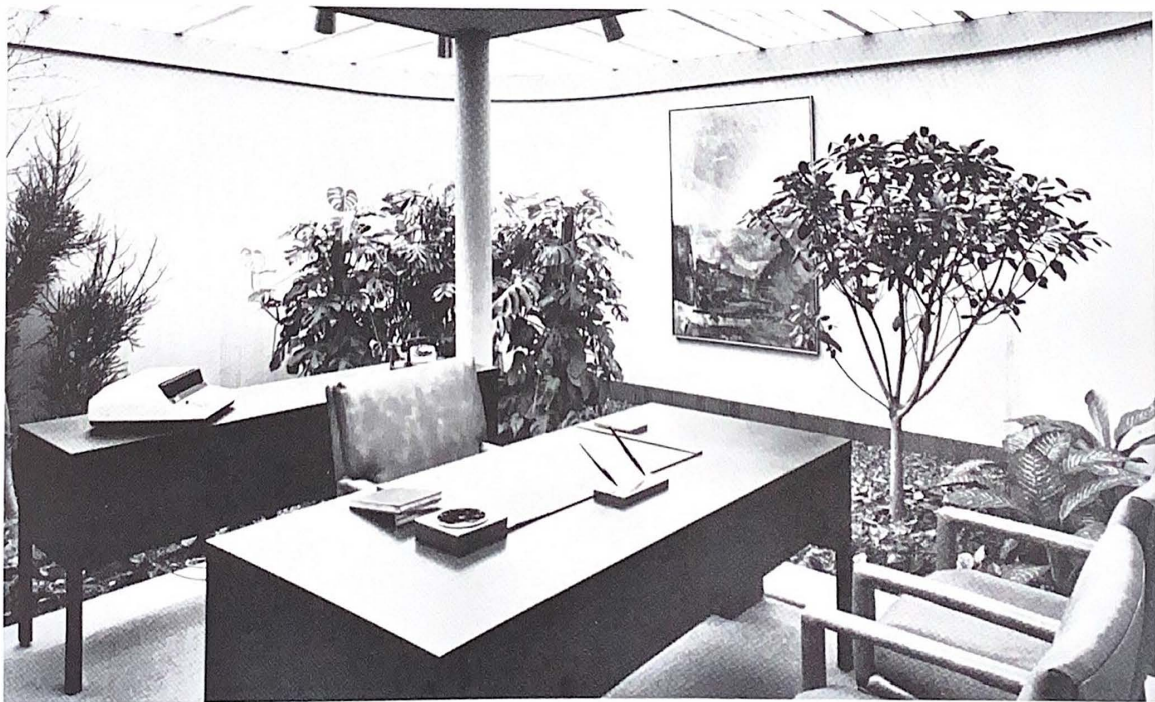
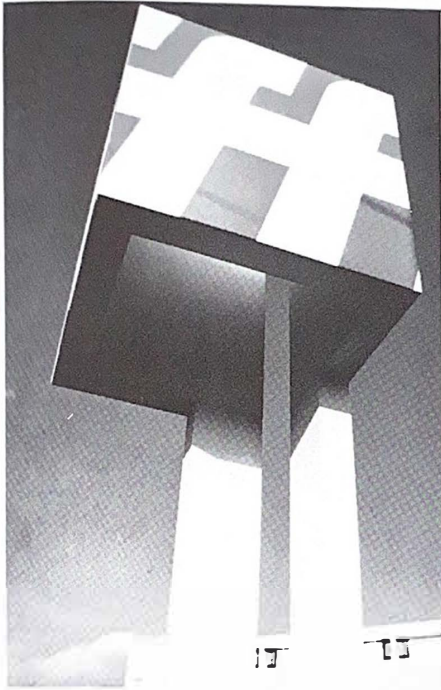
**First Federal Savings & Loan
Bethel Park Office, Ft. Couch Road**

The structure is located in the center of a commercial area and is encircled by parking lots and neon signs. Consequently, we designed a simple envelope and concentrated on a self-contained interior environment suitable to the bank's image in the community.

The IKM Partnership, AIA — Architects

86



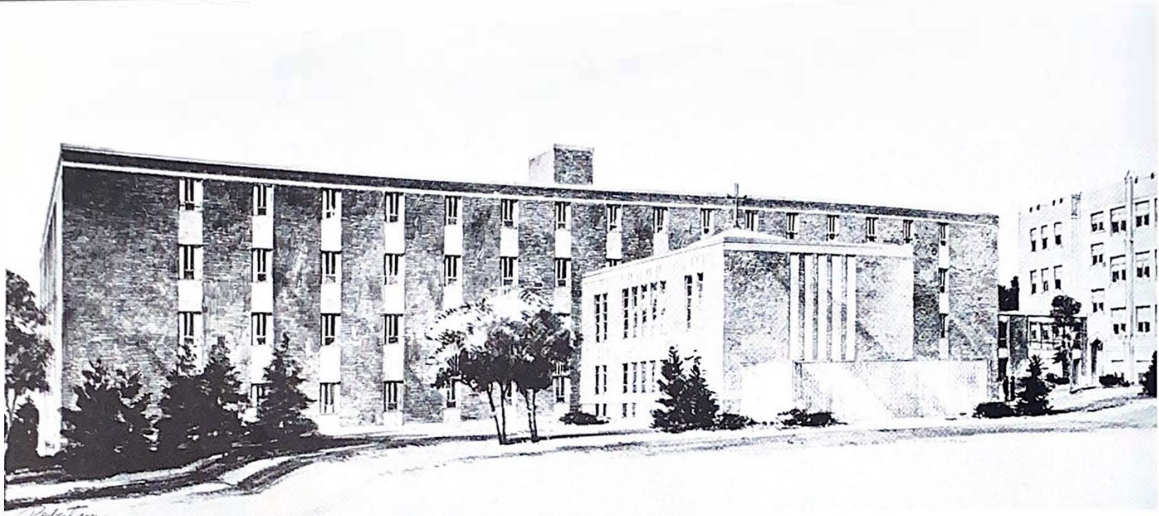


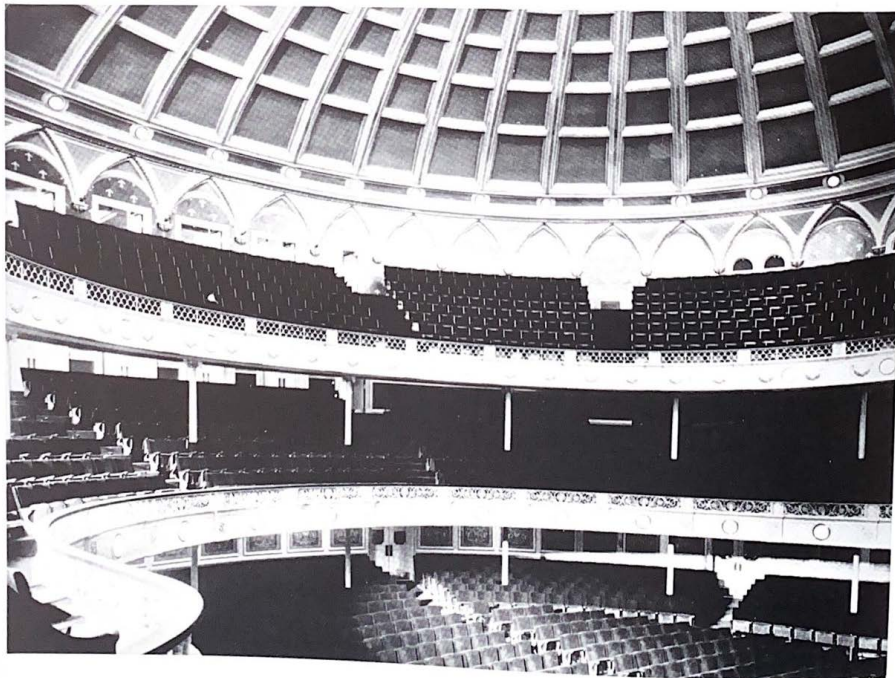
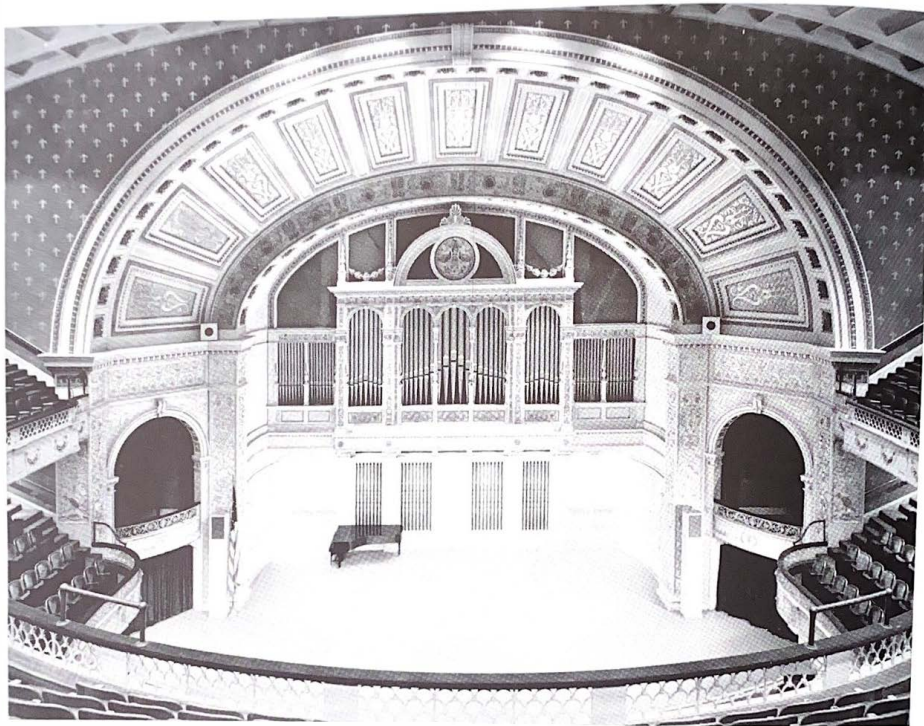
St. Joseph Hall
Coraopolis, Pennsylvania

A Nursing Convalescent Home for Aged and Infirm Sisters for the FELICIAN SISTERS OF PENNSYLVANIA containing 100 private bedroom units on three floors with one floor of medical-therapeutic services and a self-contained chapel, including living quarters for a chaplain.

A. & S. Pyzdrowski, Architects and Engineer

102

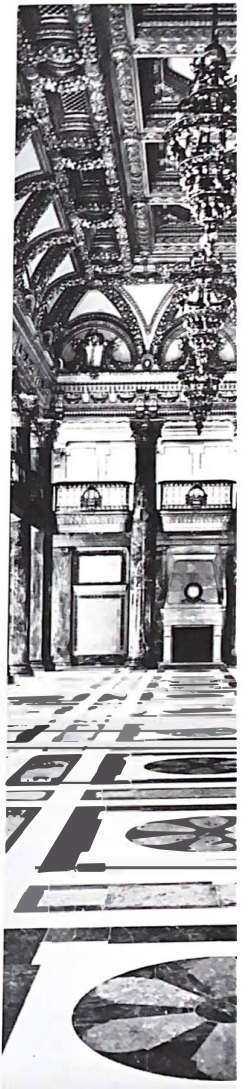




Carnegie Institute Museum

The Architectural firm of L. H. Howells and J. W. Harlow designed the Museum and Library complex in 1906, a 10 million dollar gift by Andrew Carnegie.

The style of the building is the Second Empire style. It is a masterpiece of the Arts, Neo-Baroque style. Its design is a masterpiece of the Arts and the foyer of the Music Hall.



Carnegie Institute Museum

The Architectural firm of Longfellow, Alden and Harlow designed the Museum, Art Gallery, Music Hall and Library complex in 1900, made possible by a six million dollar gift by Andrew Carnegie.

The style of the building is another example of Beaux-Arts, Neo-Baroque style. Italianate detailing is evident and the foyer of the Music Hall is exceptionally grand.

The "external" character of monumental forms is admitted to Architectural, making it a token of glorified dedication and belonging. Fixing this idea over the eyes is all the function a monument is expected to have.

In an industrialized age, quality is no longer aristocratic, and beauty is now on broader fronts of battle against novelty and/or monotony.

